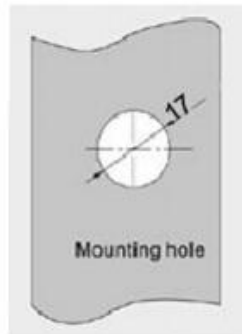
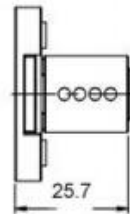
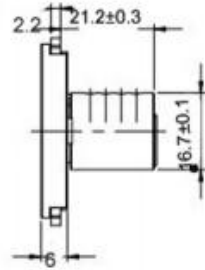
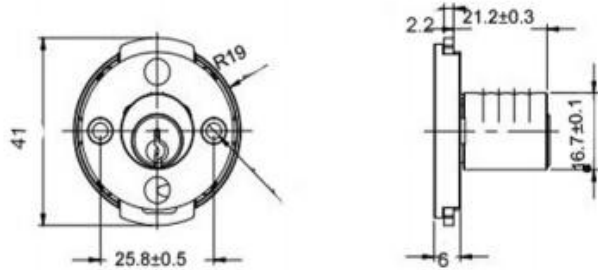


Security furniture drawer lock MK119



Material	Zinc alloy
Finished	Bright chrome, nickel
Key Combination	
Applications	Intellectualized terminal equipment, metal/wooden cabinet, underground strobe, vending/game machine, locker, AD showcase, coin-op, mail box & tools box, street kiosk, furniture, POS, parking meter, etc.
Speciality	<ol style="list-style-type: none"> 1. Pin tumbler lock system. 2. Handle smoothly. 3. Key auto return to lock position without outside force. 4. Customer-oriented development available.