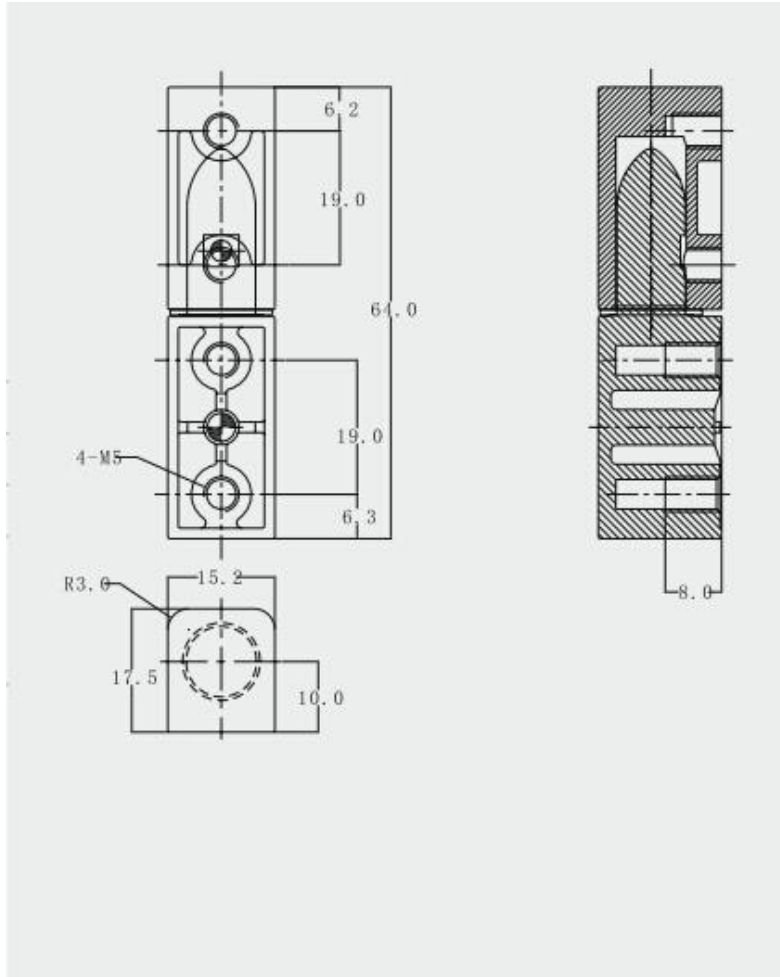


Removable Hinge MK901



Material	Zinc alloy, steel
Finished	Gray chrome, black powder coating
Key Combination	
Applications	Terminal equipment, electrical/metal/wooden cabinet, underground strobe, vending/game machine, locker, AD showcase, vehicle, street kiosk, server, etc.
Speciality	<ol style="list-style-type: none"> 1. Stronger cabinet hinge. 2. Allow for quick,easy door removal. 3. Door can also be permanently install. 4. Customer-oriented development available.